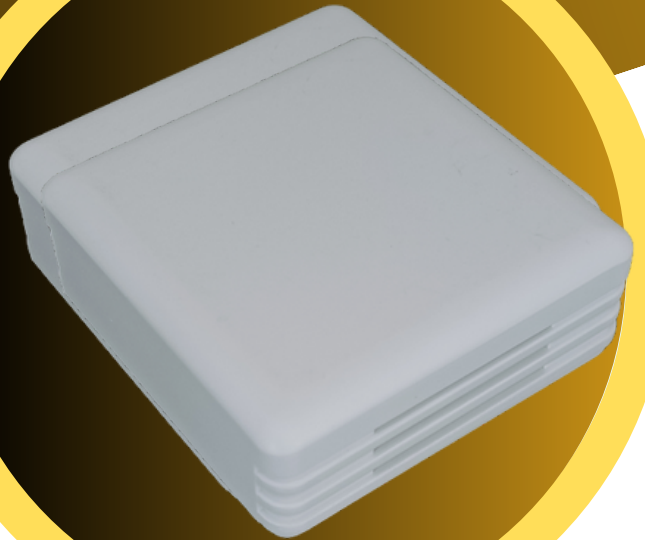


# En-Smart Sense

## ROOM TEMPERATURE AND RH TRANSMITTER

Elevating Climate  
Control and Monitoring



### KEY FEATURES

- **Accurate Measurements:** High-precision sensors for temperature and relative humidity provide reliable data.
- **Versatile Design:** Suitable for a variety of duct-mounted applications in HVAC systems, cleanrooms, laboratories, and more.
- **Analog and Digital Outputs:** Multiple output options for seamless integration into your control systems.
- **Wide Operating Range:** Designed to handle a broad range of temperature and humidity conditions.
- **Durable Construction:** Robust build to withstand challenging environmental conditions.



### OUR LOCATION

EnSmart Controls,  
417, Thendral Nagar,  
Near Jeeva Shed'  
Anthiyur-638501



### CONTACT

**Ph:** +91 9941042612  
**Email:** hema@emsi.co.in,  
narayanan\_kl@emsi.co.in



# PRODUCT SPECIFICATIONS

## TEMPERATURE SENSOR

**Measurement Range:** -40°C to 85°C / 0 to 60°C

**Accuracy:** ±0.3°C

## RELATIVE HUMIDITY SENSOR

**Measurement Range:** 0% to 100% RH

**Accuracy:** ±3%RH

## OUTPUT

**Sensor Output:** 0 to 10V DC / 4 to 20 MA / ModbusRS485

## APPLICATION

**Our Room Temperature and RH Transmitter is suitable for a wide range of applications, including:**

- HVAC Systems
- Cleanrooms
- Laboratories
- Manufacturing
- Food Processing
- Museums and Archives



## OUR LOCATION

EnSmart Controls,  
417, Thendral Nagar,  
Near Jeeva Shed'  
Anthiyur-638501



## CONTACT

**Ph:** +91 9941042612

**Email:** hema@emsi.co.in,  
narayanan\_kl@emsi.co.in



# WHY CHOOSE US ?

## EXCEPTIONAL QUALITY

- Our transmitters are built to last and provide accurate data consistently.

## CUSTOMIZATION

- Measurement Range:** We offer options for customization to meet your specific requirements.

## TECHNICAL SUPPORT

- Sensor Output:** 0 to 10V DC / 4 to 20 MA / ModbusRS485  
Our team is available to assist you with installation, calibration, and ongoing support.

## COMPETITIVE PRICING

- Quality doesn't have to come at a premium price. We offer cost-effective solutions.

## MODEL

### EN\_RSTT\_XX

V [0 to 10VDC]

A [4 to 20MA]

M [Modbus-RS485]

VD [0 to 10 VDC]

AD [4 to 20 MA]

MD [Modbus RS-485]



## OUR LOCATION

EnSmart Controls,  
417, Thendral Nagar,  
Near Jeeva Shed'  
Anthiyur-638501



## CONTACT

**Ph:** +91 9941042612

**Email:** hema@emsi.co.in,  
narayanan\_kl@emsi.co.in

